

STUDIO MEASUREMENTS



Shooting Space

Length: 16.5m / 54.1ft

Width: 7.08m / 23.3ft

Height to RSJ: 3.0m / 9.8ft

Height to Scaffolding: 3.2m / 10.6ft

Height to Ceiling: 3.5m / 11.6ft

Customisable Set Wall

Width: 5.0m / 16.5ft

Height: 3.5m / 11.6ft

Material: 12mm Plywood

Secondary Spaces

Kitchen Area: 19.48m²

Hallway Area: 26.75m²

Electric Roller Shutter

Width: 3.5m / 11.6ft

Height: 3.0m / 9.8ft

Private Courtyard

Length: 11.4m / 37.5ft

Width: 7.08m / 23.3ft

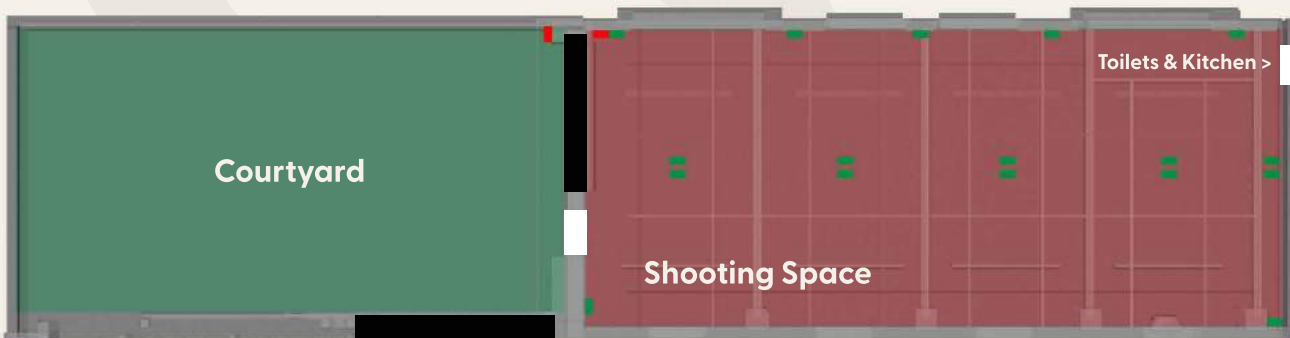
Gate Opening Width: 3.7m / 12.2ft

Total Shooting Space: 116.82m² / 1257ft²

Total Secondary Spaces: 46.23m² / 497.6ft²

Total Courtyard Space: 80.71m² / 868.8ft²

Total Studio Space: 243.76m² / 2623.8ft²



- Dual 13A socket
- 16A commando socket